



**Mobile Satellite TV Antenna
With FastFind Remote**

Installation and Operating Manual

Made in the USA

1. INTRODUCTION and BACKGROUND.....	3
2. COMPENT OVERVIEW and SPECIFICATIONS.....	4
3. INSTALLATION	5-7
4. OPERATION	8
6. TROUBLESHOOTING	9
7. MAINTENANCE	9
8. LIMITED WARRANTY	9

Introduction

Congratulations on your purchase of the Vu Qube V10. The Vu Qube V10 is equipped with a FastFind remote enabling you to quickly position the Vu Qube antenna from inside your vehicle. The Vu Qube V10 is compatible with any service provider such as DIRECTV®, DISH Network® or Bell ExpressVu.

This manual includes a:

- Brief background satellite television
- Components overview
- Installation diagrams and instructions
- Operating Instructions

The Satellite Broadcast Market is changing and expanding. The information in this manual was accurate at the time of printing. If the Vu Qube does not operate as shown in this manual, please call Wallace Technologies at 1-866-802-2228 or email us at info@vuqube.com.

Technical Support

Phone: (866) 802-2228

Email: info@vuqube.com

Web: www.vuqube.com

We have also included a Laminated Quick Reference Card that we suggest you keep with the Vu Qube Controller or near your Satellite TV receiver.

Background

Satellites used for television signals are 22,300 miles (37,000 km) above the earth's equator. The purpose of the Vu Qube is to acquire the signal traveling that great distance and transmit the signal to your digital receiver in your vehicle so you can watch TV anywhere you park.

Satellite television, like other communications relayed by satellite, starts with a transmitting antenna located at an uplink facility on Earth. The uplink dish is pointed toward a specific satellite and the uplinked signals are transmitted. The signal transmitted to the satellite is within a specific frequency range and is received by one of the transponders tuned to that frequency range aboard that satellite. The transponder then transmits the signals back to Earth but at a different frequency band (to avoid interference with the uplink signal). The leg of the signal path from the satellite to the receiving Earth station is called the downlink.

The downlinked satellite signal, quite weak after traveling the great distance is received by the Vu Qube antenna, which reflects the weak signal to a focal point that gets transferred to a feedhorn. **The receiving antenna must have a clear view, without obstruction, of the southern sky to maximize signal acquired.** This signal is then amplified and converted by the LNBf (Low-noise block converter feed) to a signal that is sent via a co-axial cable to the receiver. Once the signal is transmitted from the Vu Qube to your receiver, you can enjoy all of your programming in your vehicle just like at home!

Vu Qube V10 Component Overview

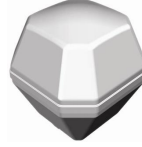
Manual Quick



Reference Card



Vu Qube Antenna



Vu Qube FastFind Remote



RG6 Coaxial
Cable (20')



Mounting Kit (Purchased Separately)

Kit shown is Model Number 31100

You will need to supply your own fasteners to attach the Vu Qube bracket to your vehicle. Depending on the Cab material, fasteners such as lag screws, well nuts, sheet metal screws, toggle bolts and T anchors may be used, and should always be used in combination with compatible sealant to environmentally seal the holes after installation.

Items needed to watch TV

Satellite TV service
Satellite TV receiver
Television

Tools needed for installation

Drill and drill bits
Tape measure
Screw drivers and Wrenches
Adhesive sealant (compatible with vehicle material)
Fasteners to secure Components and wiring

SPECIFICATIONS

Height:	17.5"
Width:	16"
Weight:	10.5 lbs
Range:	US/Southern Canada
Compatibility:	DirecTV, Dish Network, Bell ExpressVu, Free-to-air receivers
Operating Temp:	May experience difficulty moving when temperatures are below 0°F

Installation

Main Components

Vu Qube V10 Antenna

Part #: VQV10
FCC ID: UUM10156V10
IC: 6873A -10156V10



Vu Qube V10 Remote

Part #: VQV10R
FCC ID: UUM10157V10
IC: 6873A -10157V10



This device complies with Part 15 of the FCC rules. Operation is subject to the following two conditions: 1) This device must not cause harmful interference, and 2) This device must accept interference received including interference that may cause undesired operation.

This device complies with Part 15 of the FCC rules. Operation is subject to the following two conditions: 1) This device must not cause harmful interference, and 2) This device must accept interference received including interference that may cause undesired operation.

Overview of Installation

- The Vu Qube is designed to be mounted to a vehicle (Figure 1).
- It is recommended to install the Vu Qube with a minimum of 4" of the top cover above the highest point of the cab or air shield (Figure 1) and away from interfering objects like smoke stacks.
- The power harness needs to be connected to a 12 volt power source.
- The phone-style connector needs to enter the cab so it can be plugged into the Vu Qube Controller.
- The coaxial cable needs to enter the Cab to be connected to the satellite receiver.

Figure 1. It is recommended to have a minimum of 4" of the VuQube above the highest point on the cab, including the air shield. It is also recommended to be as far away as possible from any object that may obstruct direct line of sight of the antenna to the southern sky. Such interfering items may include air-conditioner units, logistic devices and brackets, beacons and smoke stacks.

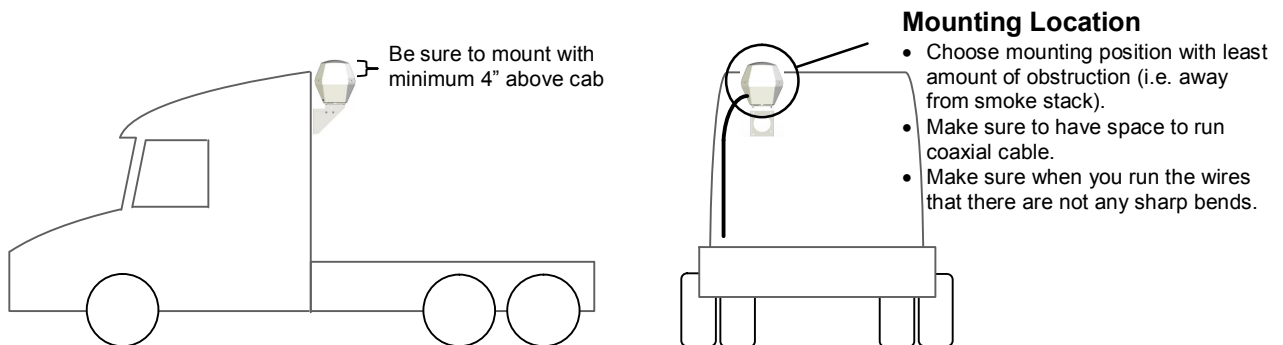
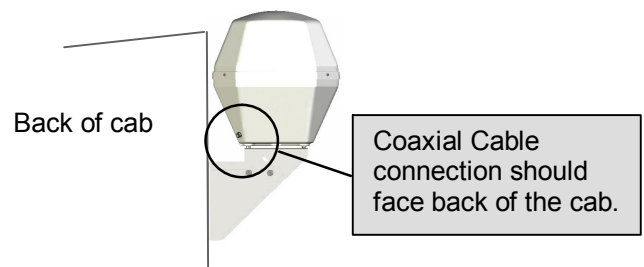


Figure 2. Face connections for wiring towards the back of the cab.



Installation

Mounting bracket and selecting location to run wiring

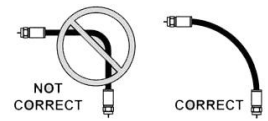
NOTE: Instructions for mounting the Vu Qube is illustrated using Mounting Bracket Kit part number 31100. This Mounting Bracket Kit and others were designed specifically to mount the Vu Qube to the back of a truck cab. Please contact Wallace Technologies, LLC (866-802-2228) regarding other bracket options.

1) Select and mark both area on back of Cab to mount the bracket AND location to run coaxial from the Vu Qube to the inside of the Cab.

- Be sure at least 4" of Vu Qube is above the highest part of the roof so that adequate signal can be received by the antenna. The clearance of the Vu Qube is important because the antenna requires a direct line of site to the satellite in the southern sky to acquire a signal.

NOTE: If you are unable to install the Vu Qube 4" above the cab due to height restriction, install with the maximum available clearance. With less of the Vu Qube top cover above the Cab, there may be difficulty acquiring satellite signal in the Northeastern US (Maine, New Hampshire, Vermont and Massachusetts).

- The Vu Qube requires a 16" diameter of space to be mounted.
- Make sure you allow enough space for the wiring so that that the coaxial cable does not have a sharp bend.
- It is best to select a position on the rear of the cab free from obstruction. Obstructions like smoke stacks, brackets, and air-conditioning units may interfere with satellite signal or prevent the satellite signal from reaching the Vu Qube.



2) Drill holes for mounting bracket with proper size depending on fasteners used.

Note: The installer is responsible for determining the most appropriate fastener to secure the bracket to the cab. Depending on the Cab material, fasteners such as lag screws, well nuts, sheet metal screws, toggle bolts and T anchors may be used, and should always be used in combination with compatible sealant to environmentally seal the holes after installation.

3) Mount bracket to cab using fasteners.

4) Seal holes with a sealant compatible with cab, faring, or air shield material, depending on where Vu Qube is mounted.

5) Drill hole to pass the harnesses inside the vehicle.

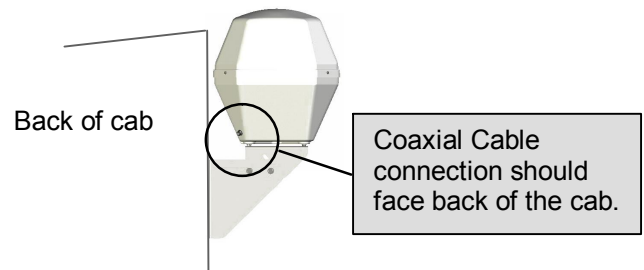
Installation

Mounting Antenna to Bracket

1) Place Vu Qube on bracket

- Wire connections from the Vu Qube (Figure 2) should be positioned toward the Cab (front of the vehicle) and to side where hole is drilled to run wires inside the cab.

Figure 2. Face connections for wiring towards the back of the cab.



2) Secure Vu Qube to bracket by fastening with Nuts provided. Be sure to tighten nuts adequately to ensure Vu Qube is securely in place.

Wiring

- 1) **Connect 20' coaxial to Vu Qube.**
- 2) **Pass 20' coaxial cable through hole previously drilled.**
- 3) **Connect coaxial cable from Vu Qube to SATELLITE IN port on Satellite Receiver.**
- 4) **Make sure Satellite Receiver is connected to TV per manufactures instructions.**

Vu Qube V10 Operation

- **IMPORTANT! CLEAR LINE OF SIGHT** for Vu Qube Antenna to the **SOUTHERN SKY REQUIRED**. Physical obstruction (i.e., smokes stacks, buildings, trees, telephone poles, etc.) can block the satellite signal from reaching the antenna.
- **Satellite TV and receiver technology are constantly changing**. If you experience difficulty contact (866) 802-2228

Locking-on a Satellite

NOTE: Satellite Receiver and TV MUST be ON

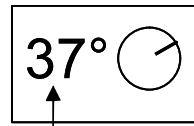
1. Determine Dish Elevation

Options: Enter Zip Code in System Set-up on receiver

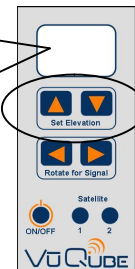
-OR-

Use Quick Reference Maps to estimate Elevation

2. Position Antenna to proper Elevation using Up/Down arrows on Vu Qube Remote.



This number indicates Elevation



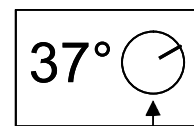
3. Go to the signal meter screen on TV.

Choose transponder number:

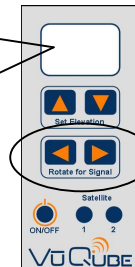
Dish Network #11

DirecTV #19

4. Rotate Antenna using Left/Right arrows on Vu Qube remote until signal appears on Signal Meter screen.



Line moves to indicate Rotating Antenna



5. Fine tune and maximize signal using all 4 arrows.

Satellite Position Memory

TO STORE POSITION: Hold down either the Satellite 1 or Satellite 2 button for at least 2.5 seconds. The LCD will show "P1" or "P2" when button is released.

TO RECALL POSITION: Hold down either the Satellite 1 or Satellite 2 button for less than 2.5 seconds. The LCD will "r1" or "r2".

TO CANCEL RECALL: Press any arrow button to stop moving to a stored position.

Troubleshooting

If you cannot lock-on to the correct satellite, it is most likely that an object is blocking the signal. If this is the case, move the vehicle to have an unobstructed view of the southern sky.

ERROR CODES	Problem	ACTION
E0	Remote is unable to send commands to Antenna	<ul style="list-style-type: none">• Make sure RECEIVER is turned ON• Make sure Coax from Antenna is attached to Receiver• Move remote closer to Antenna
E1	Remote is unable to receive response from Antenna	Move remote closer to Antenna
E2	Miscommunication between remote and antenna	<i>Call Wallace Technologies @ 866-802-2228</i>

Maintenance

The Vu Qube has been designed to be maintenance and trouble free. For optimum signal strength, keep the cover clean from dirt, bugs, and other debris. Periodic washing of the top cover with mild soap and water is recommended.

If you plan on storing your vehicle for long periods of time, it is recommended that the system be put through a search procedure on a quarterly basis to keep all moving parts in good working order.

If you have any comments or questions, please contact Wallace Technologies at (866) 802-2228, or email at info@wallacet.com

Limited Warranty

Every Vu Qube is thoroughly inspected and tested before leaving the factory and is covered by a **two year parts and one year labor limited warranty** from the date of original purchase. This warranty does not cover installation and external wiring or refurbished units.

Should any trouble develop during the warranty period, contact Wallace Technologies. Only Wallace Technologies and certified dealers are authorized to perform warranty evaluations and repairs.